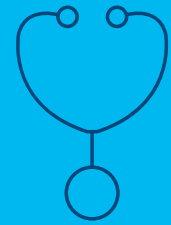


# FINDING A DOCTOR IN OUR DIRECTORY IS EASY



Is your doctor or hospital in the Cigna network? Cigna's online directory makes it easy to find who (or what) you're looking for.

## SEARCH OUR NETWORK IN FIVE SIMPLE STEPS

### Step 1

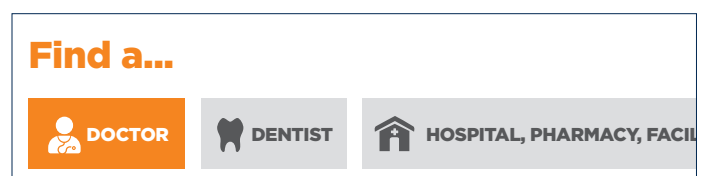
Go to **www.Cigna.com**, click on FIND A DOCTOR/ DENTIST at the top of the screen. Then select the orange box that reads "If your insurance plan is offered through work."

(If you already have a Cigna plan, log in to **myCigna**.)



### Step 2

Choose whether you're looking for a doctor or a place to receive medical care.



### Step 3

Enter the geographic location you want to search.

SEARCH LOCATION:  
  
[Use my current location](#)

over >

Together, all the way.™



Offered by: Cigna Health and Life Insurance Company, Connecticut General Life Insurance Company or their affiliates.

880087 d 01/15

#### Step 4

Select one of the plans offered by your employer during open enrollment.

#### SELECT A PLAN:

PICK  
▼

Medical: Remind me later  
Dental: Remind me later

#### Step 5

Enter a name, specialty or other search word. Click SEARCH to see your results.

#### LOOKING FOR:

A-Z  
▼

SEARCH

**That's it!** You can also refine your search results by distance, years in practice, specialty, languages spoken and more.

### Search first. Then choose Cigna.

There are so many things to love about Cigna. Our directory search is just the beginning.

After you enroll, you'll have access to myCigna - your one-stop source for managing your health plan, anytime, anywhere. On myCigna, you can estimate your health care costs, manage and track claims, learn how to live a healthier life and more.

**Questions?** Call



Health care professionals and facilities that participate in the Cigna network are independent practitioners solely responsible for the treatment provided to their patients. They are not agents of Cigna.

"Cigna" and the "Tree of Life" logo are registered service marks, and "Together, all the way." is a service mark of Cigna Intellectual Property, Inc., licensed for use by Cigna Corporation and its operating subsidiaries. All products or services are provided by or through such operating subsidiaries and not by Cigna Corporation. Such operating subsidiaries include Connecticut General Life Insurance Company (CGLIC), Cigna Health and Life Insurance Company (CHLIC), Cigna Behavioral Health, Inc., and HMO or service company subsidiaries of Cigna Health Corporation and Cigna Dental Health, Inc. Cigna HealthCare HMO plans are offered by Cigna HealthCare of Arizona, Inc., Cigna HealthCare of California, Inc., Cigna HealthCare of Colorado, Inc., Cigna HealthCare of Connecticut, Inc., Cigna HealthCare of Florida, Inc., Cigna HealthCare of Georgia, Inc., Cigna HealthCare of Illinois, Inc. (IL & IN), Cigna HealthCare of Indiana, Inc., Cigna HealthCare of St. Louis, Inc. (MO, KS & IL), Cigna HealthCare of North Carolina, Inc., Cigna HealthCare of New Jersey, Inc., Cigna HealthCare of South Carolina, Inc., Cigna HealthCare of Tennessee, Inc. (TN & MS), and Cigna HealthCare of Texas, Inc. Cigna Dental PPO and Cigna Dental Choice (TX) plans are offered by CGLIC or CHLIC, with network management services provided by Cigna Dental Health, Inc. and certain of its subsidiaries. Cigna Dental Care (DHMO) plans are offered by Cigna Dental Health Plan of Arizona, Inc., Cigna Dental Health of California, Inc., Cigna Dental Health of Colorado, Inc., Cigna Dental Health of Delaware, Inc., Cigna Dental Health of Florida, Inc., a **Prepaid Limited Health Services Organization licensed under Chapter 636, Florida Statutes**, Cigna Dental Health of Kansas, Inc. (KS & NE), Cigna Dental Health of Kentucky, Inc., Cigna Dental Health of Maryland, Inc., Cigna Dental Health of Missouri, Inc., Cigna Dental Health of New Jersey, Inc., Cigna Dental Health of North Carolina, Inc., Cigna Dental Health of Ohio, Inc., Cigna Dental Health of Pennsylvania, Inc., Cigna Dental Health of Texas, Inc., and Cigna Dental Health of Virginia, Inc. In other states, Cigna Dental Care plans are offered by CGLIC, CHLIC, or Cigna HealthCare of Connecticut, Inc. and administered by Cigna Dental Health, Inc. Oklahoma Policy Numbers: Medical - GM6000 C1 et al (CGLIC); HP-APP-1 et al (CHLIC). Dental - Indemnity/PPO: GM6000 ELI288 et al (CGLIC), Cigna Dental Care (DHMO): GM6000 DEN201V1 (CGLIC), Cigna Dental Care Specialty Access: GM6000 DEN200V1 (CGLIC); Indemnity/Dental PPO: HP-POL99 (CHLIC), Cigna Dental Care (DHMO) & Specialty Access: HP-POL115 (CHLIC).